

# Week\_25\_Animation

Trinity Computer Animation  
03/27/2024

Today we will continue our Blender Series by expanding our software basics, Animation knowledge. Also have a demo from a past student - Daniel

First I want to review some Higher Level Basics:

- 1) What is the World Wide Web?
- 2) Which is bigger the World Wide Web or the internet?
- 3) What does URL stand for and what is it...  
(What is it not?)
- 4) Where is the URL found on your browser?
- 5) What is the search bar, and where is it found on your browser?
- 6) What is the difference from the URL and the search bar?

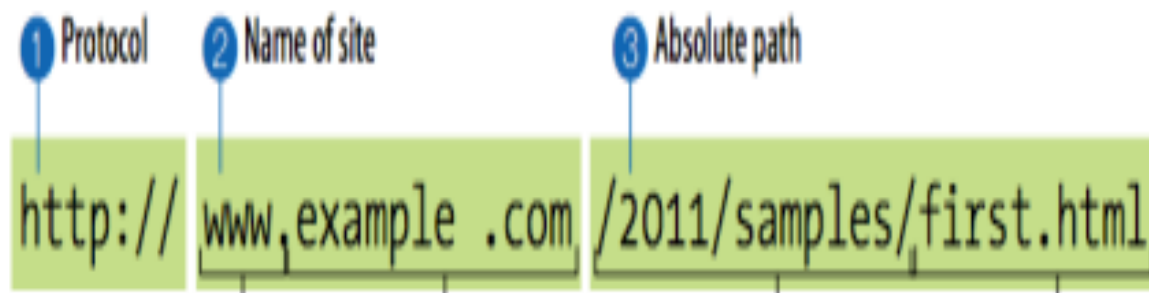
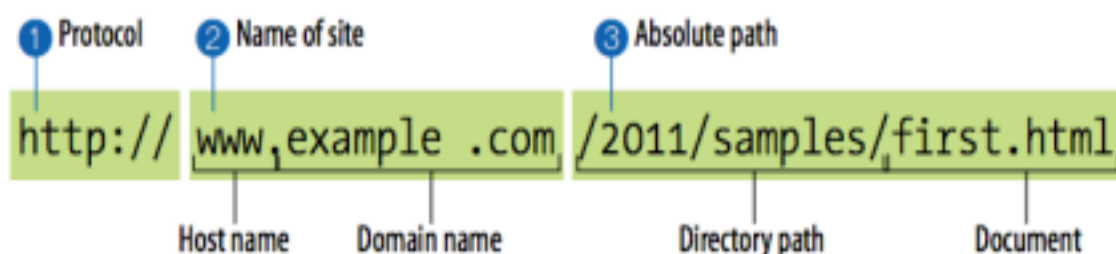
## Web Page Addresses (URLs)

Every page and resource on the Web has its own special address called a **URL**, which stands for Uniform Resource Locator. It's nearly impossible to get through a day without seeing a URL (pronounced "U-R-L," not "erl") plastered on the side of a bus, printed on a business card, or broadcast on a television commercial. Web addresses are fully integrated into modern vernacular.

Some URLs are short and sweet. Others may look like crazy strings of characters separated by dots (periods) and slashes, but each part has a specific purpose. Let's pick one apart.

### The parts of a URL

A complete URL is generally made up of three components: the protocol, the site name, and the absolute path to the document or resource, as shown in Figure 2-1.



Host name	Domain name	Directory path	Document

---

To sum it up, the URL in [Figure 2-1](#) says it would like to use the HTTP protocol to connect to a web server on the Internet called *www.example.com* and request the document *first.html* (located in the *samples* directory, which is in the ~~2012~~2011 directory).

❶ **http://**

The first thing the URL does is define the protocol that will be used for that particular transaction. The letters HTTP let the server know to use Hypertext Transfer Protocol, or get into “web mode.”

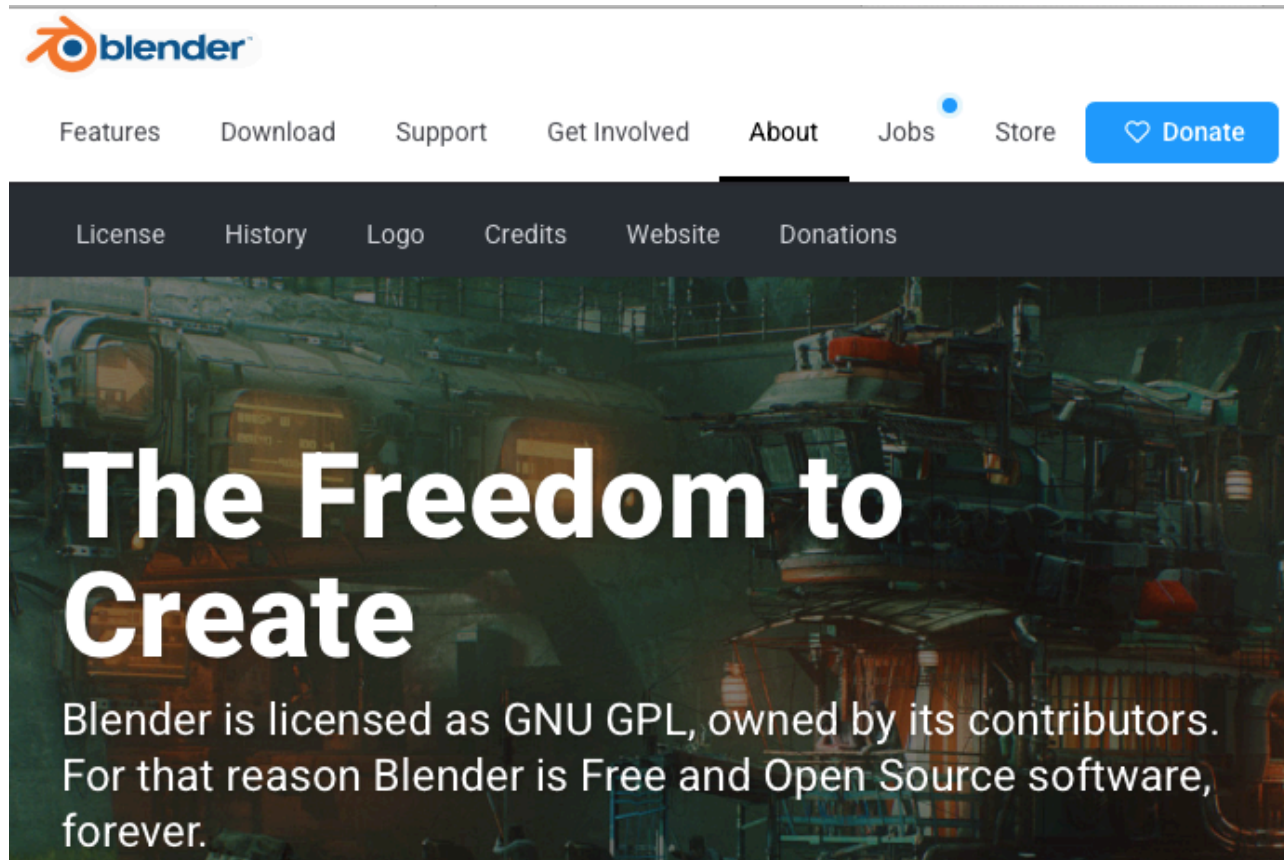
❷ **www.example.com**

The next portion of the URL identifies the website by its domain name. In this example, the domain name is *example.com*. The “www.” part at the beginning is the particular host name at that domain. The host name “www” has become a convention, but is not a rule. In fact, sometimes the host name may be omitted. There can be more than one website at a domain (sometimes called subdomains). For example, there might also be *development.example.com*, *clients.example.com*, and so on.

❸ **/2012/samples/first.html**

This is the absolute path through directories on the server to the requested HTML document, *first.html*. The words separated by slashes are the directory names, starting with the root directory of the host (as indicated by the initial /). Because the Internet originally comprised computers running the Unix operating system, our current way of doing things still

Now lets continue with our Animation Software - Blender:



<https://www.youtube.com/watch?v=-zKhD5JCxP8>

## Mission

Get the world's best 3D CG technology in the hands of artists as free/open source software.

# Vision

Everyone should be free to create 3D CG content, with free technical and creative production means and free access to markets.

## The Organization

The Blender Foundation (2002) is an independent public benefit organization. Its spin-off corporation Blender Institute (2007) hosts the foundation's offices and currently employs 24 people who work on the Blender software and creative projects to validate and test Blender in production environments.

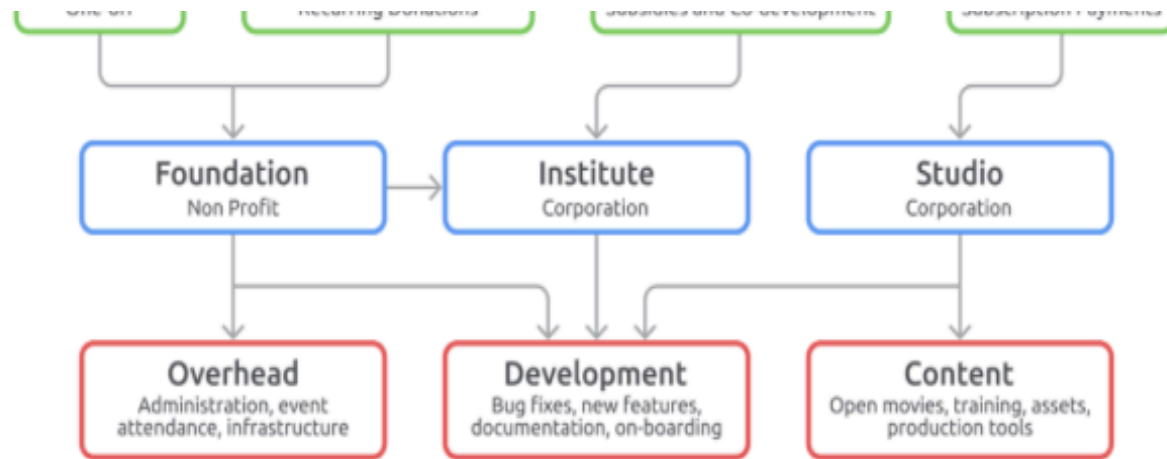
In 2020 the Institute split in two companies; Blender Institute now solely functions as working company for the Blender Foundation, and the new Blender Studio will contribute to the Blender mission producing content and testing production pipelines.

These organizations support the community of contributors on blender.org. That is where Blender is being made.

How does Blender get funding?







blender.org/about



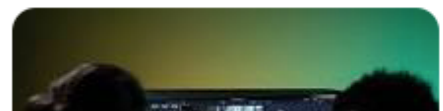
## The Software

Blender is the free and open source 3D creation suite. It supports the entirety of the 3D pipeline—modeling, rigging, animation, simulation, rendering, compositing and motion tracking, even video editing and game creation. Advanced users employ Blender’s API for Python scripting to customize the application and write specialized tools; often these are included in Blender’s future releases. Blender is well suited to individuals and small studios who benefit from its unified pipeline and responsive development process. Examples from many Blender-based projects are available in the [showcase](#).

Blender is cross-platform and runs equally well on Linux, Windows, and Macintosh computers. Its interface uses OpenGL to provide a consistent experience. To confirm specific compatibility, the list of [supported platforms](#) indicates those regularly tested by the development team.

Is Blender good for beginners?

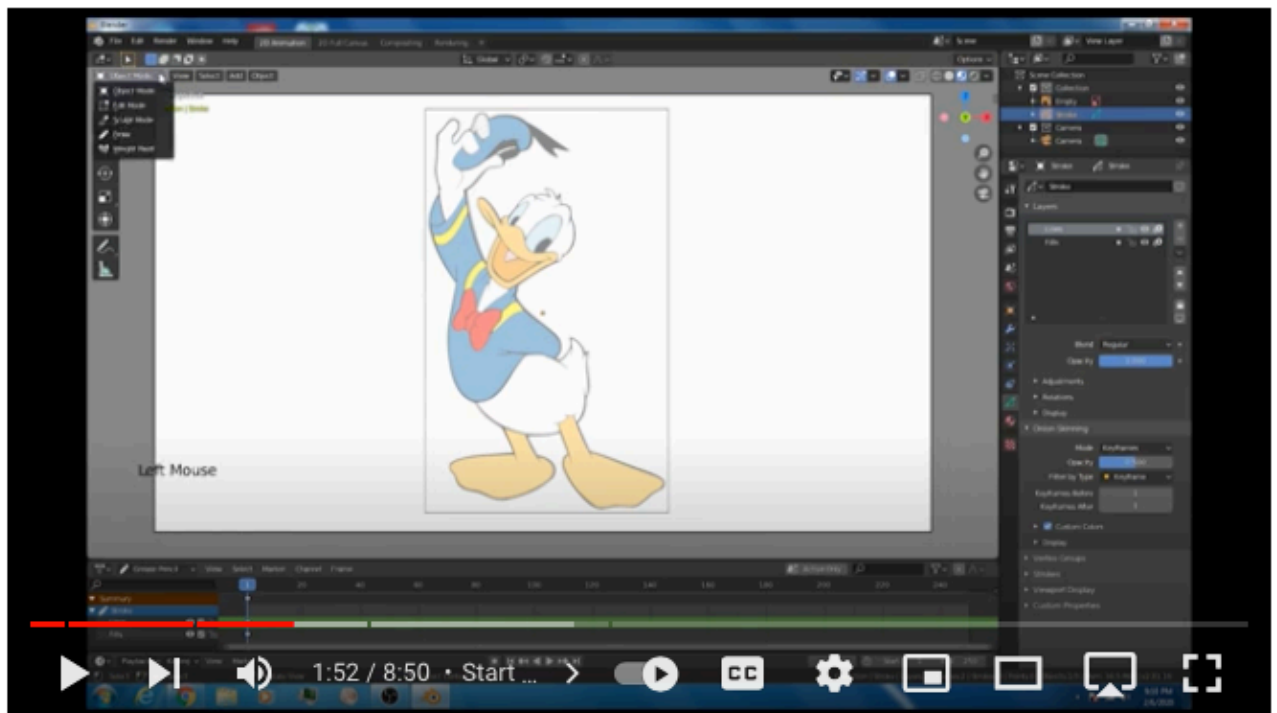
Is Blender good for beginners? **Blender software can be great for beginners**, as it offers pretty much



everything you'd ever need in the world of 3D animation. It's diverse, meaning that if you start on Blender, you can approach more complicated software with a degree of knowledge. Jun 2, 2022



Next we will look at a short Blender Video:



### **Blender 2.8 Grease pencil animation basics**

<https://youtu.be/dBXN7OKjq-U>

<New Features Grease P.>

<https://youtu.be/ZsUeA9igqSE>

## Homework:

1) Review this URL - ( Please bookmark this page - on your browser)  
<https://docs.blender.org/manual/en/latest/interface/index.html>

2) Review -  
[https://docs.blender.org/manual/en/latest/grease\\_pencil/introduction.html](https://docs.blender.org/manual/en/latest/grease_pencil/introduction.html)

3) Review -  
[https://docs.blender.org/manual/en/latest/grease\\_pencil/index.html](https://docs.blender.org/manual/en/latest/grease_pencil/index.html)